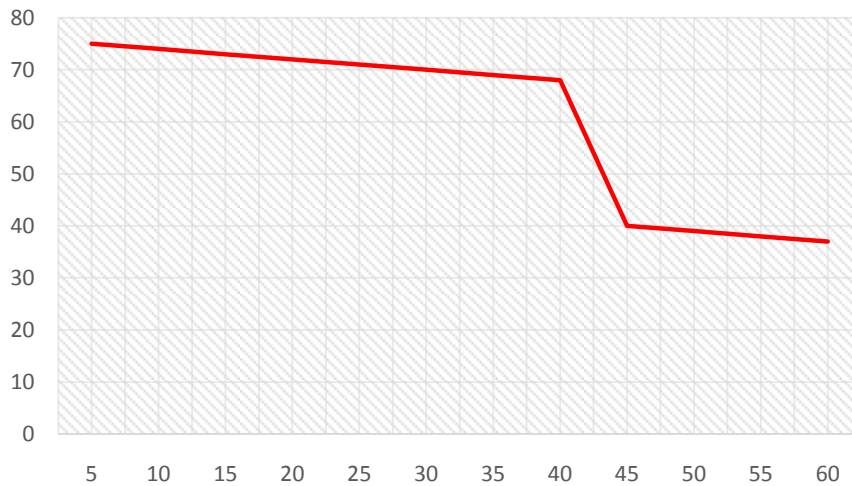




## Double Poured Indefinite ChillSolid Rolls

**HARDNESS DROP (SH) / DISTANCE FROM  
SURFACE (MM)**



### What are DPICSolid Rolls?

The Spun cast double poured indefinite chill solid rolls have a highly alloyed centrifugal shell as a working layer while the core is soft grey iron. The shell microstructure is high in hardness due to a mixture of carbides and graphite.

#### Composition of the Shell (working layer)

Carbon	Nickel	Chrome	Manganese	Moly
3.4 – 3.9	0.7 – 1 %	2 – 2.5 %	0.6 max	0.2% max
3.4 – 3.9	1.7 – 2 %	1.5 – 2 %	0.6 max	0.2% max

#### Properties

- A uniform shell thickness with high shore hardness
- Vibration damping capabilities to provide a good surface finish
- Good thermal conductivity to reduce fire cracking during use

**Hardness:** 70 – 75HS

**Applications:** generally used in the last two to three stands (F4, F5 and F6 Stands) in the Finishing Stands of Hot Strip Mills as well as in Roughing & Finishing Stands of Four High Plate Mills and Finishing Stands of Rod & Narrow Strip Mills

### OUR PRODUCTS

- DPIC Rolls
- ICCI Rolls
- SG Iron Rolls
- Adamite Rolls
- Forged Iron Rolls
- Barrel Shafted Rolls

### OTHER PRODUCTS

- Pinion gears
- Gear couplings
- Universal couplings
- Spindle
- Fly wheel
- Bearing chokes
- Pulley
- Other millaccessories

### OUR EDGE

- 50 + Year of service
- CNC machining
- High Quality product
- Consultancy services

Send in an enquiry for the quotes & metallic composition for our products or to receive the product Catalogue.

A-2, INDUSTRIAL ESTATE,  
MALERKOTLA, PB – 148023  
Email: [arisp56@gmail.com](mailto:arisp56@gmail.com)  
Mob: +91-9814153145