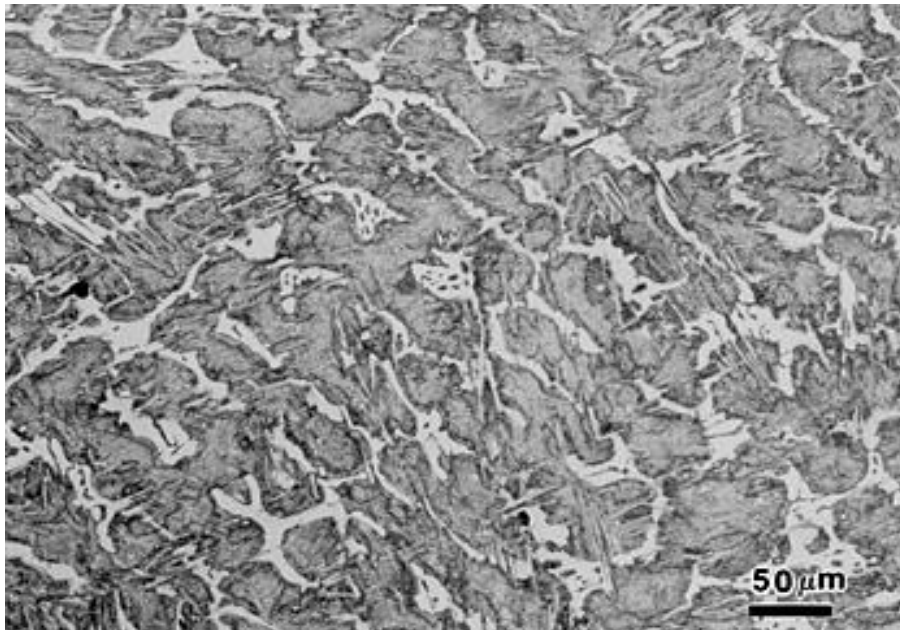




Double Poured High Chrome Solid Rolls



What are DPIC High Chrome Solid Rolls?

The Spun cast double poured high chrome solid rolls have a highly alloyed centrifugal shell as a working layer while the core is soft grey iron. The shell microstructure contains martensite, bainite and carbides to provide a tough structure

Composition of the Shell (working layer)

Carbon	Nickel	Chrome	Manganese	Moly
3.3 – 3.7	0.7 – 1 %	4 – 4.5 %	0.6 max	0.2% max

Properties

- A uniform shell thickness with high shore hardness
- Excellent wear resistance
- resistant to fractures and oxidation at high temperatures

Hardness: 75 – 80HS

Applications: Suitable for finishing stands of strip mills where high hardness is required

OUR PRODUCTS

- DPIC Rolls
- ICCI Rolls
- SG Iron Rolls
- Adamite Rolls
- Forged Iron Rolls
- Barrel Shafted Rolls

OTHER PRODUCTS

- Pinion gears
- Gear couplings
- Universal couplings
- Spindle
- Fly wheel
- Bearing chokes
- Pulley
- Other millaccessories

OUR EDGE

- 50 + Year of service
- CNC machining
- High Quality product
- Consultancy services

Send in an enquiry for the quotes & metallic composition for our products or to receive the product Catalogue.

A-2, INDUSTRIAL ESTATE,
MALERKOTLA, PB – 148023
Email: arispatt56@gmail.com
Mob: +91-9814153145