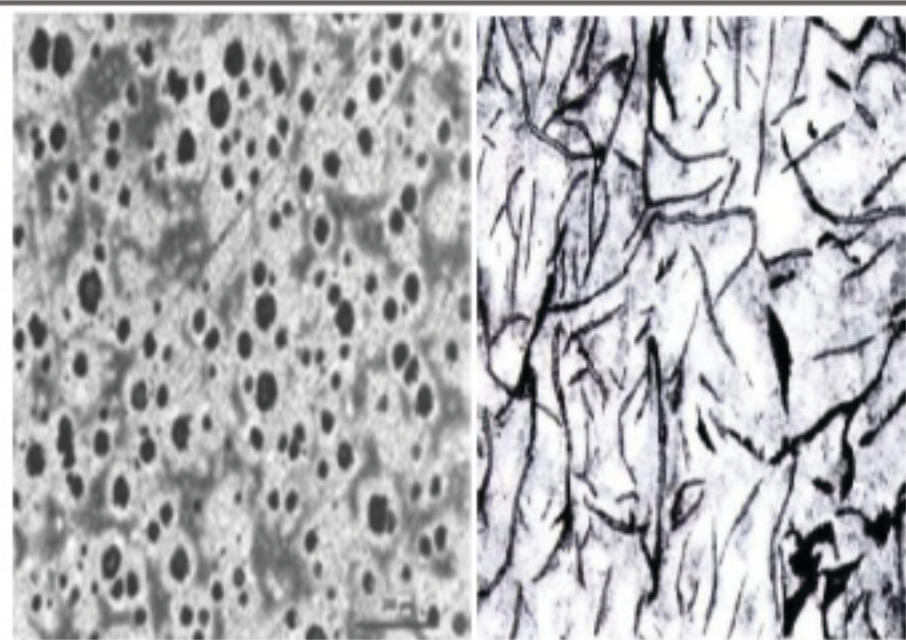


SPHEROIDAL GRAPHITE (SG) IRON ROLLS



What are SG Iron Rolls?

As shown in the above picture, a form of cast iron formed by considerably varying the structure of the material to increase overall strength. Cast iron when treated with Magnesium mixture leads to a blast which in turn creates the spheroidal shape (left side of picture) of the nodules as compared to lamellar nodules (right side of the picture) in cast iron.

Composition of the Shell (working layer)

| Carbon | Nickel | Chrome | Sulphur | Moly |
|---------|-------------|-------------|-----------|----------|
| 3.3–3.5 | 1.6 – 2.0 % | 0.4 – 0.8 % | 0.025 max | 0.4% max |

Properties

- High strength and toughness
- High wear resistance
- Resistance to fire cracks

Hardness: 50 – 65 HS

Applications: Suitable for heavier passes and severe stress in the roughing and intermediate stands of structural mills

OUR PRODUCTS

- DPIC Rolls
- ICCI Rolls
- SG Iron Rolls
- Adamite Rolls
- Forged Iron Rolls
- Barrel Shafted Rolls

OTHER PRODUCTS

- Pinion gears
- Gear couplings
- Universal couplings
- Spindle
- Fly wheel
- Bearing chokes
- Pulley
- Other millaccessories

OUR EDGE

- 50 + Year of service
- CNC machining
- High Quality product
- Consultancy services

Send in an enquiry for the quotes & metallic composition for our products or to receive the product Catalogue.